

Root Canal Retreatment



Clarence Street
DENTAL Group

In most cases, root canal treatment will rid a tooth of pain and infection. However, in some cases a tooth may not heal as expected and continue to have symptoms such as pain or infection. If this happens, a root canal retreatment may be performed so that the tooth can be saved.

Why would a Root Canal fail?

With the appropriate care, your teeth that have had endodontic treatment should last as long as other natural teeth. Unfortunately, this treatment may need to be redone if the initial root canal treatment has failed. This could arise months to years after the initial treatment has been completed.

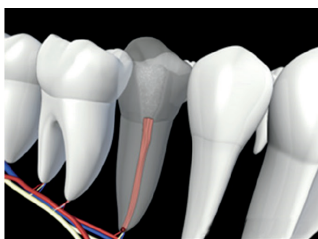
There are many reasons that a root canal may need to be retreated.

- Some tooth roots may have canals that were narrow or curved, and difficult to navigate in the original treatment.
- There may be abnormal anatomy, with accessory or multiple canals that were not detected in the first root canal treatment.
- A cracked or loose filling or crown may sometimes “leak” and allow bacteria to re-infect a root canal.
- A crown or restoration was not placed within the appropriate amount of time following the procedure.
- A new cavity may form on the tooth, exposing the root canal filling material, causing infection and the root canal to fail.

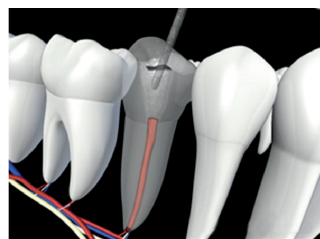
What happens in a root canal retreatment?

Once a root canal failure has been diagnosed, the possible options are root canal retreatment, endodontic surgery, or dental extraction. Your endodontist will speak with you and help you to determine if your tooth would benefit from a root canal retreatment. Success of retreatment depends on each individual situation. Your endodontist will discuss different treatment options and the chances of success for each.

If retreatment is required, it will usually be completed with local anaesthetic; however, other forms of sedation are also available.



Inflamed Tissue



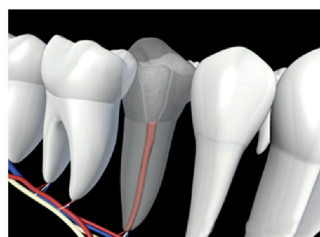
Filling Removed



Canals Cleaned



Root Material Placed



Filling Restored



Healed Tooth

Root Canal Retreatment



Clarence Street
DENTAL Group

The tooth will be opened to gain access to the root canal filling material, and any restorative or filling material will be removed. The previous root canal will be taken out of the canal using special instrumentation. The tooth's canals will then be cleaned, and the tooth will be carefully examined with magnification and illumination for any signs of fracture, additional canals, or unusual anatomy that may have caused the original treatment to fail. Once cleaned, the endodontist will fill and seal the canals and place a temporary filling in the tooth.

What are my next steps after the retreatment?

As a temporary filling is currently placed inside your tooth, you will need to return to your dentist as soon as possible in order to have a new crown or restoration placed on the tooth to restore full functionality. Your endodontist typically suggests having this permanent restoration completed within 3-4 weeks of your root canal retreatment.